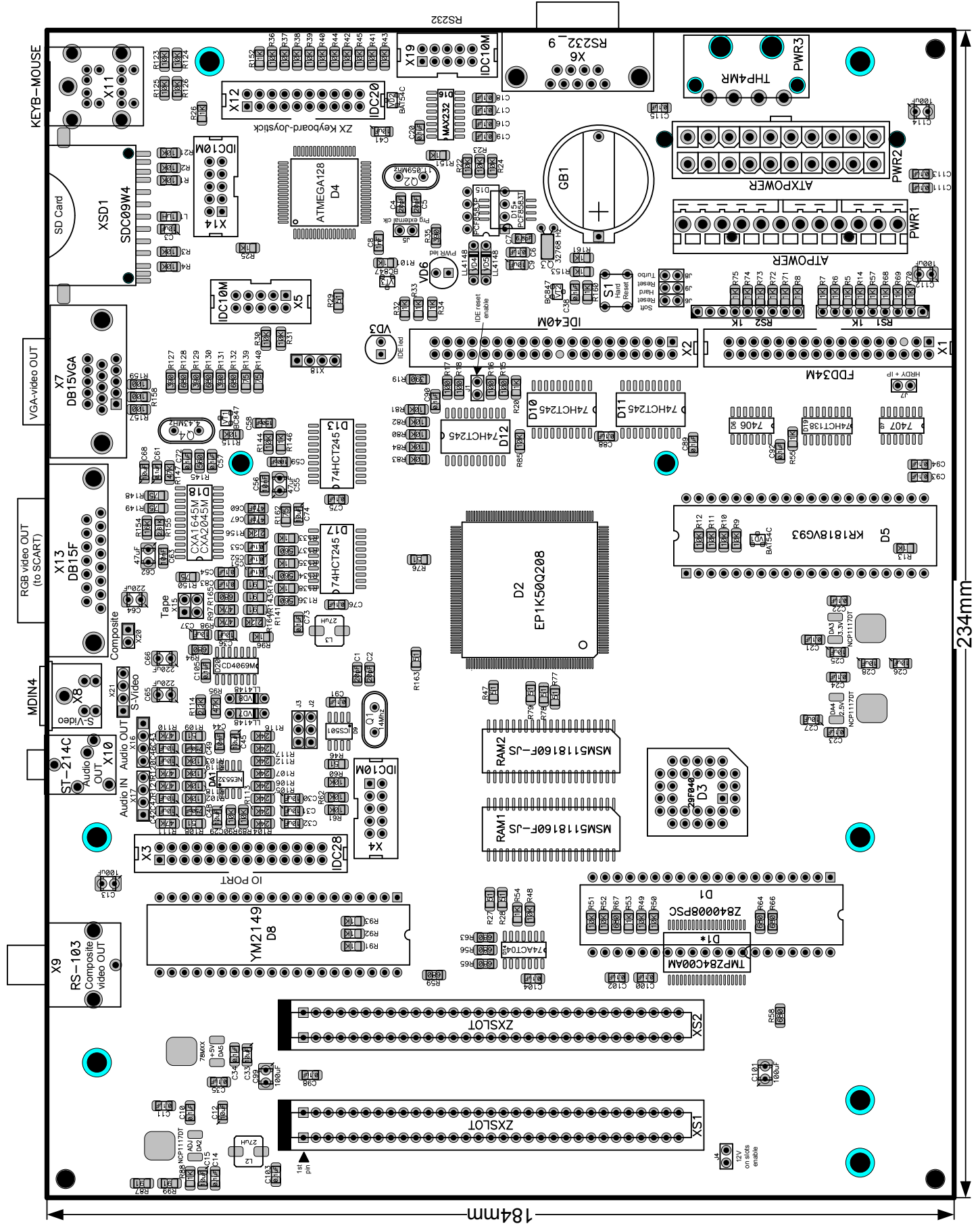


# ZX Evolution B Revision B (22.12.2009)

Top side



### Warning:

1. Parts marked by "\*" is alternative for non-mark parts;
2. Positive pin of electrolytic capacitors marked by slash;
3. One of power connectors (PWR1,PWR2,PWR3) is enough;
4. If uses D18, CXA1645M then not solder R155; if use CXA2075 then not solder C54, C61, C68; R147, R154;
5. RS1, RS2 is alternative for SMD resistors;
6. First pin have square pad and first pin have triangle for SMD chips.

### Jumpers default:

- J1 - open
- J2 - open
- J3 - open
- J4 - open
- J5 - open
- J6 - open
- J7 - open

ZX  
Evolution  
Revision B

Bottom  
side

